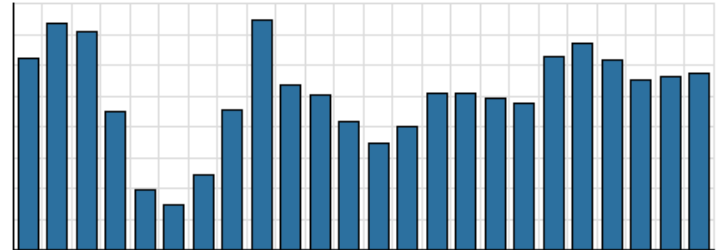


Monthly Stats Brief Narrative

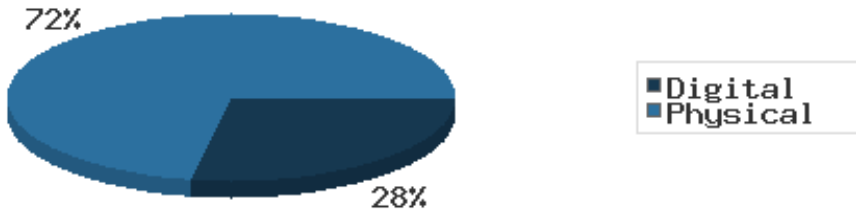
Through November 2021, the number of patrons entering our buildings somewhat increased system-wide compared to this same time year-to-date the previous year. Combined physical and digital use of library materials increased year-to-date compared to 2020. About 6% of our registered cardholders checked out a physical item this past month, while about 2% of registered cardholders checked out a digital item.

District Total Checkouts Over 24 Months



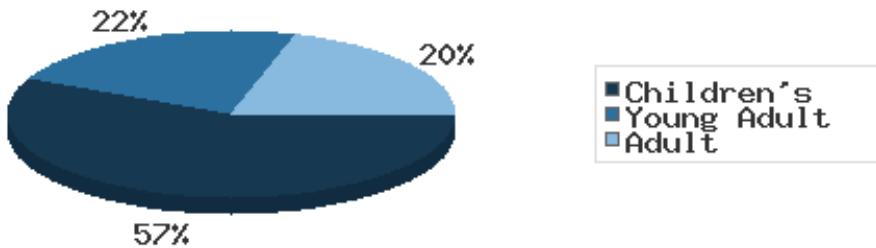
Digital usage has comprised about 28% of total materials use year-to-date through November 2021, and digital usage slightly increased from this time in 2020.

Digital vs. Physical Circulation YTD



In November 2021, BDL patrons saved \$89,321.94 by checking out 8,015 physical items from the library. Our programming for all ages and our digital services further increase the library's value to the community, bringing the total estimated value to \$110,847.89.

Programs Offered in 2021 YTD



Compared to this time year-to-date 2020, the number of programs BDL offered has greatly increased. Attendance at programs greatly decreased over this same period.

There were a total of 12 visits between the Bronson, Coldwater, Quincy, and Union Twp. branches for curbside service.

See the full statistical report, starting on the next page, for details and more graphs. The most up-to-date stats are always available online and interactive at <https://www.BranchDistrictLibrary.org/stats>.

Attendance

November 2021

	BDL Monthly Total	BDL YTD	BDL Year End (Year-over-Year Change)				
			2020	2019	2018	2017	2016
Attendance	6,247	64,934 (+8%)	63,336 (-66%)	183,677 (-4%)	191,866 (-1%)	193,922 (-4%)	200,991 (+3%)
Hours Open	857.00	9,585.00 (+34%)	7,132.50 (-37%)	11,250.25 (-9%)	12,387.00 (+14%)	10,869.15 (-0%)	10,877.50 (+25%)
Number of Hours Scheduled Open Each Week (Tracking Since 1/2018)	239.00		237.00 (-2%)	241.00 (-2%)	245.00	0.00	0.00

Patrons

November 2021

	BDL Monthly Total	BDL YTD	BDL Year End (Year-over-Year Change)				
			2020	2019	2018	2017	2016
Population in our Service Area (Tracking Since 2018)	44,959	44,999 (avg) (+0%)	44,931 (avg) (-0%)	45,093 (avg) (-0%)	45,113 (avg)	0 (avg)	0 (avg)
Library Card Holders	22,744	22,296 (avg) (+5%)	21,365 (avg) (+4%)	20,493 (avg) (-4%)	21,350 (avg) (-16%)	25,346 (avg) (+3%)	24,554 (avg) (+4%)
Patrons Who Checked Out a Physical Item	1,476	1,350 (avg) (+20%)	1,102 (avg) (-48%)	2,136 (avg) (-2%)	2,180 (avg) (-5%)	2,305 (avg) (-1%)	2,336 (avg) (-1%)
New Library Card Holders Added	154	661 (-49%)	1,304 (+111%)	618 (-39%)	1,021 (+21%)	844 (-15%)	989 (-9%)
In-House Holds Filled for Our Library Card Holders	782	9,822 (+27%)	9,467 (-10%)	10,527 (-4%)	10,987 (-6%)	11,650 (+12%)	10,407 (+2%)
Active Hoopla Users	283	292 (avg) (-10%)	322 (avg) (+11%)	290 (avg) (+14%)	255 (avg) (+50%)	170 (avg) (+92%)	89 (avg)
Active OverDrive Users	223	223 (avg) (-6%)	234 (avg) (+10%)	213 (avg) (+18%)	180 (avg) (+27%)	143 (avg) (-1%)	144 (avg) (-1%)

Physical Collection

Tracking Item-Type Breakdown Since 8/2017

November 2021

	BDL Monthly Total	BDL YTD	BDL Year End (Year-over-Year Change)				
			2020	2019	2018	2017	2016
Physical Books and All other Print Materials in the Catalog	91,359		91,278 (-8%)	98,689 (-2%)	100,253 (-0%)	100,293	0
Physical Audiobooks in the Catalog	1,871		1,949 (+9%)	1,783 (-5%)	1,881 (+2%)	1,852	0
Physical Video Materials in the Catalog	11,658		11,352 (-1%)	11,460 (+8%)	10,579 (+1%)	10,519	0
Physical Music Recordings in the Catalog	42		178 (+12%)	159 (-53%)	337 (-2%)	345	0
TOTAL Physical Items in the Catalog	104,930		105,257 (-6%)	112,053 (-1%)	113,050 (+0%)	113,009 (-11%)	126,407 (-4%)

Digital Collection

Tracking Since 8/2017

November 2021

	BDL Monthly Total	BDL YTD	BDL Year End (Year-over-Year Change)				
			2020	2019	2018	2017	2016
Ebooks in All Digital Collections	638,134		480,691 (+30%)	370,666 (+21%)	306,595 (+33%)	230,178	0
Audiobooks in All Digital Collections	162,086		128,892 (+50%)	86,004 (+19%)	71,995 (+36%)	52,833	0
Video Materials in All Digital Collections	22,367		17,791 (+9%)	16,267 (+14%)	14,229 (-10%)	15,767	0
Music Recordings in All Digital Collections	20,077		273,294 (+1%)	271,614 (+13%)	239,705 (-14%)	280,259	0
Periodicals in All Digital Collections	3,959		3,668	0	0	0	0
TOTAL of All Digital Collections	846,623		904,336 (+21%)	744,551 (+18%)	632,524 (+9%)	579,037	0

Total Collection

Tracking Since 8/2017

November 2021

	BDL Monthly Total	BDL YTD	BDL Year End (Year-over-Year Change)				
			2020	2019	2018	2017	2016
Combined Physical Items	104,930		105,257 (-6%)	112,053 (-1%)	113,050 (+0%)	113,009 (-11%)	126,407 (-4%)
Combined Digital Collections	846,623		904,336 (+21%)	744,551 (+18%)	632,524 (+9%)	579,037	0
TOTAL of all Collections	947,594		1,009,593 (+18%)	856,604 (+15%)	745,574 (+8%)	692,046 (+447%)	126,407 (-4%)

Use of Physical Items

November 2021

	BDL Monthly Total	BDL YTD	BDL Year End (Year-over-Year Change)				
			2020	2019	2018	2017	2016
Checkouts of Cataloged Items	6,030	63,009 (+28%)	52,227 (-53%)	110,285 (-3%)	113,128 (-6%)	120,916 (+2%)	118,595 (-3%)
Renewals of Cataloged Items	691	7,710 (+18%)	7,181 (-47%)	13,490 (-1%)	13,607 (-8%)	14,804 (-4%)	15,480 (+0%)
Items Used in the Library But Not Checked Out	105	2,234 (-65%)	6,404 (+54%)	4,166 (+49%)	2,803 (-8%)	3,050 (+126%)	1,351 (+7,011%)
Checkouts of Uncataloged Items	97	1,335 (+43%)	1,001 (-70%)	3,294 (-16%)	3,904 (+38%)	2,839 (-38%)	4,578 (+4%)
Requests from BDL Patrons for Items at Other MeLCat Libraries, Actually Fulfilled	524	6,483 (+61%)	4,599 (-53%)	9,873 (+1%)	9,777 (+20%)	8,169 (+15%)	7,112 (+16%)
Requests from Other MeLCat Libraries for Items at BDL, Actually Fulfilled	568	5,262 (+87%)	3,175 (-58%)	7,582 (-23%)	9,810 (+25%)	7,867 (+11%)	7,068 (+46%)
TOTAL Use of Physical Items	8,015	86,033 (+23%)	74,587 (-50%)	148,690 (-3%)	153,029 (-3%)	157,645 (+2%)	154,184 (+1%)

Use of Digital Resources

November 2021

	BDL Monthly Total	BDL YTD	BDL Year End (Year-over-Year Change)				
			2020	2019	2018	2017	2016
OverDrive Checkouts	1,080	12,207 (+1%)	13,051 (+21%)	10,822 (+14%)	9,501 (+21%)	7,823 (+4%)	7,502 (+2%)
Hoopla Checkouts	1,031	11,573 (-8%)	13,604 (+9%)	12,530 (-2%)	12,796 (+20%)	10,669 (+96%)	5,432
All Other Digital Services	1,319	9,610 (+37%)	7,140 (-33%)	10,604 (+11%)	9,572 (-72%)	34,047 (-46%)	62,788 (+38%)
TOTAL Use of Digital Resources	3,430	33,742 (+4%)	34,861 (+3%)	33,956 (+7%)	31,869 (-39%)	52,539 (-31%)	75,722 (+43%)

Total Item Usage

November 2021

	BDL Monthly Total	BDL YTD	BDL Year End (Year-over-Year Change)				
			2020	2019	2018	2017	2016
Combined Checkouts of Physical Items	8,015	86,033 (+23%)	74,587 (-50%)	148,690 (-3%)	153,029 (-3%)	157,645 (+2%)	154,184 (+1%)
Combined Use of Digital Resources	3,430	33,742 (+4%)	34,861 (+3%)	33,956 (+7%)	31,869 (-39%)	52,539 (-31%)	75,722 (+43%)
TOTAL Uses of All BDL Items	11,445	119,775 (+17%)	109,448 (-40%)	182,646 (-1%)	184,898 (-12%)	210,184 (-9%)	229,906 (+12%)

Cataloging

November 2021

	BDL Monthly Total	BDL YTD	BDL Year End (Year-over-Year Change)				
			2020	2019	2018	2017	2016
Physical Items Added to the Catalog	996	11,193 (+20%)	9,938 (+2%)	9,719 (-12%)	11,056 (+0%)	11,009 (-1%)	11,091 (+29%)
Physical Items Deleted from the Catalog	755	16,079 (-0%)	17,003 (+58%)	10,769 (-2%)	10,941 (-55%)	24,366 (+53%)	15,968 (+84%)

Reference Questions

November 2021

	BDL Monthly Total	BDL YTD	BDL Year End (Year-over-Year Change)				
			2020	2019	2018	2017	2016
General Reference Questions in Person	847	7,694 (+86%)	4,347 (-50%)	8,748 (+32%)	6,641 (-12%)	7,537 (+20%)	6,285 (+124%)
Questions via Telephone Calls	479	5,328 (+41%)	4,559 (+11%)	4,111 (+6%)	3,866 (-24%)	5,079 (+10%)	4,622 (+60%)
Reference Questions Delivered Online	14	260 (+31%)	243 (-14%)	281 (+85%)	152 (-35%)	233 (-23%)	304 (+34%)
In-Person Questions on Computer or Internet Use	375	3,352 (+22%)	2,767 (-63%)	7,505 (+6%)	7,068 (-3%)	7,285 (+11%)	6,568 (+18%)
In-Person Questions about Our Online Databases	13	136 (+36%)	107 (-69%)	349 (-15%)	409 (+13%)	363 (+114%)	170 (+85%)
In-Person Tax Form Questions	0	232 (-19%)	286 (-12%)	326 (-37%)	518 (+5%)	493 (+4%)	473 (-18%)
TOTAL of All Reference Questions	1,728	17,002 (+51%)	12,309 (-42%)	21,320 (+14%)	18,654 (-11%)	20,990 (+14%)	18,422 (+52%)

Notary Services

Began 9/2017

November 2021

	BDL Monthly Total	BDL YTD	BDL Year End (Year-over-Year Change)				
			2020	2019	2018	2017	2016
Patrons Who Used our Free Notary Services	4	61 (+33%)	46 (-52%)	95 (+44%)	66 (+371%)	14	0
Documents Notarized	3	102 (+89%)	54 (-56%)	124 (+85%)	67 (+253%)	19	0

MeLCat

November 2021

	BDL Monthly Total	BDL YTD	BDL Year End (Year-over-Year Change)				
			2020	2019	2018	2017	2016
Requests from BDL Patrons for Items at Other MeLCat Libraries	561	6,851 (+55%)	5,026 (-52%)	10,538 (+1%)	10,462 (+20%)	8,699 (+14%)	7,643 (+5%)
Requests from BDL Patrons for Items at Other MeLCat Libraries, Actually Fulfilled	524	6,483 (+61%)	4,599 (-53%)	9,873 (+1%)	9,777 (+20%)	8,169 (+15%)	7,112 (+16%)
Requests from Other MeLCat Libraries for Items at BDL	553	5,599 (+53%)	4,067 (-52%)	8,405 (-18%)	10,296 (+29%)	7,994 (+13%)	7,096 (+18%)
Requests from Other MeLCat Libraries for Items at BDL, Actually Fulfilled	568	5,262 (+87%)	3,175 (-58%)	7,582 (-23%)	9,810 (+25%)	7,867 (+11%)	7,068 (+46%)

Programs Held

November 2021

	BDL Monthly Total	BDL YTD	BDL Year End (Year-over-Year Change)				
			2020	2019	2018	2017	2016
Early Childhood Literacy Programs Held (Tracking since 2021)	7	97	0	0	0	0	0
Juvenile Programs Held	33	231 (-52%)	551 (-31%)	804 (+10%)	730 (+1%)	720 (+19%)	604 (+5%)
Young Adult Programs Held	11	102 (-18%)	138 (-55%)	304 (-10%)	338 (+41%)	239 (+47%)	163 (+8%)
Adult Programs Held	8	87 (-63%)	257 (+54%)	167 (+23%)	136 (-7%)	146 (-34%)	220 (+40%)
All-Ages Programs Held (Tracking since 2021)	7	65	0	0	0	0	0
Early Childhood Literacy Summer Reading Programs Held (Tracking since 2021)	0	9	0	0	0	0	0
Juvenile Summer Reading Events Held	0	96	0	173 (+52%)	114 (+20%)	95 (+7%)	89 (+6%)
Young Adult Summer Reading Events Held	0	25	0	61 (+24%)	49 (-14%)	57 (+97%)	29 (-66%)
Adult Summer Reading Events Held	0	27	0	17 (+467%)	3	0	3 (-40%)
All-Ages Summer Reading Programs Held (Tracking since 2021)	0	26	0	0	0	0	0
Computer Classes Held	0	1	1 (-99%)	81 (+305%)	20 (-9%)	22 (+57%)	14 (-36%)
TOTAL of All Programs	66	1,487 (+75%)	947 (-41%)	1,607 (+16%)	1,390 (+9%)	1,279 (+14%)	1,122 (+4%)

Program Attendance

November 2021

	BDL Monthly Total	BDL YTD	BDL Year End (Year-over-Year Change)				
			2020	2019	2018	2017	2016
Attendees at Early Childhood Literacy Programs (Tracking since 2021)	89	1,252	0	0	0	0	0
Attendees at Juvenile Programs	271	3,508 (-86%)	25,317 (+73%)	14,654 (-7%)	15,725 (+2%)	15,351 (+48%)	10,371 (+23%)
Attendees at Young Adult Programs	71	681 (-78%)	3,204 (+29%)	2,489 (-23%)	3,218 (-15%)	3,806 (+276%)	1,011 (+14%)
Attendees at Adult Programs	68	1,820 (-89%)	16,263 (+519%)	2,627 (+33%)	1,970 (-0%)	1,979 (-3%)	2,048 (-5%)
Attendees at All-Ages Programs (Tracking since 2021)	115	4,250	0	0	0	0	0
Attendees at Early Childhood Literacy Summer Reading Programs (Tracking since 2021)	0	146	0	0	0	0	0
Attendees at Juvenile Summer Reading Events	0	1,798	0	4,186 (+8%)	3,864 (+24%)	3,116 (-20%)	3,904 (+56%)
Attendees at Young Adult Summer Reading Events	0	181	0	279 (-16%)	333 (-50%)	671 (+127%)	295 (+14%)
Attendees at Adult Summer Reading Events	0	179	0	310 (+265%)	85	0	21 (-73%)
Attendees at All-Ages Summer Programs (Tracking since 2021)	0	730	0	0	0	0	0
Attendees at Computer Classes	0	1	0	26 (+30%)	20 (-5%)	21 (+75%)	12 (-59%)
TOTAL of All Program Attendance	614	14,546 (-67%)	44,784 (+82%)	24,571 (-3%)	25,215 (+1%)	24,944 (+41%)	17,662 (+23%)

Summer Reading Overview

November 2021

	BDL Monthly Total	BDL YTD	BDL Year End (Year-over-Year Change)				
			2020	2019	2018	2017	2016
Juveniles Signed Up for Summer Reading Program	0	407 (+347%)	91 (-87%)	711 (-5%)	747 (-35%)	1,153 (+19%)	967 (+13%)
Young Adults Signed up for Summer Reading Program	0	77 (+166%)	29 (-78%)	134 (-65%)	378 (-2%)	385 (+241%)	113 (-64%)
Adults Signed Up for Summer Reading Program	0	122 (+270%)	33 (-79%)	159 (-36%)	248 (+112%)	117 (+36%)	86 (+1%)
Juveniles who Completed Summer Reading Program	0	220 (+142%)	91 (-76%)	385 (+48%)	260 (-50%)	518 (+13%)	459 (-10%)
Young Adults who Completed Summer Reading Program	0	38 (+31%)	29 (-63%)	79 (-41%)	135 (-50%)	268 (+332%)	62 (-49%)
Adults who Completed Summer Reading Program	0	30 (-9%)	33 (-72%)	118 (-28%)	165 (+72%)	96 (+60%)	60 (+7%)
Juvenile Summer Reading Events Held	0	96	0	173 (+52%)	114 (+20%)	95 (+7%)	89 (+6%)
Young Adult Summer Reading Events Held	0	25	0	61 (+24%)	49 (-14%)	57 (+97%)	29 (-66%)
Adult Summer Reading Events Held	0	27	0	17 (+467%)	3	0	3 (-40%)
Attendees at Juvenile Summer Reading Events	0	1,798	0	4,186 (+8%)	3,864 (+24%)	3,116 (-20%)	3,904 (+56%)
Attendees at Young Adult Summer Reading Events	0	181	0	279 (-16%)	333 (-50%)	671 (+127%)	295 (+14%)
Attendees at Adult Summer Reading Events	0	179	0	310 (+265%)	85	0	21 (-73%)

Summer Reading Program Signups

November 2021

	BDL Monthly Total	BDL YTD	BDL Year End (Year-over-Year Change)				
			2020	2019	2018	2017	2016
Juveniles Signed Up for Summer Reading Program	0	407 (+347%)	91 (-87%)	711 (-5%)	747 (-35%)	1,153 (+19%)	967 (+13%)
Young Adults Signed up for Summer Reading Program	0	77 (+166%)	29 (-78%)	134 (-65%)	378 (-2%)	385 (+241%)	113 (-64%)
Adults Signed Up for Summer Reading Program	0	122 (+270%)	33 (-79%)	159 (-36%)	248 (+112%)	117 (+36%)	86 (+1%)
TOTAL Summer Reading Program Signups	0	606 (+296%)	153 (-85%)	1,004 (-27%)	1,373 (-17%)	1,655 (+42%)	1,166 (-7%)

Summer Reading Program Completions

November 2021

	BDL Monthly Total	BDL YTD	BDL Year End (Year-over-Year Change)				
			2020	2019	2018	2017	2016
Juveniles who Completed Summer Reading Program	0	220 (+142%)	91 (-76%)	385 (+48%)	260 (-50%)	518 (+13%)	459 (-10%)
Young Adults who Completed Summer Reading Program	0	38 (+31%)	29 (-63%)	79 (-41%)	135 (-50%)	268 (+332%)	62 (-49%)
Adults who Completed Summer Reading Program	0	30 (-9%)	33 (-72%)	118 (-28%)	165 (+72%)	96 (+60%)	60 (+7%)
TOTAL Summer Reading Program Completions	0	288 (+88%)	153 (-74%)	582 (+4%)	560 (-37%)	882 (+52%)	581 (-16%)

Library-Provided Computer Services

November 2021

	BDL Monthly Total	BDL YTD	BDL Year End (Year-over-Year Change)				
			2020	2019	2018	2017	2016
One-hour sessions on Library Wifi	25,217	267,026 (+2%)	284,892 (-40%)	474,750 (+2%)	465,219 (+9%)	425,714 (+4%)	410,437 (+17%)
Desktop, Laptop, and Tablet Computers Available for Public Use	92		88	88 (-1%)	89 (+22%)	73	73
Sessions on Library-Provided Computers	1,197	10,128 (+8%)	9,604 (-73%)	35,720 (-22%)	45,687 (+3%)	44,181 (+6%)	41,513 (-11%)
Hours Library-Provided Computers Used (Tracking Since 2018)	717.12	5,918.99 (-2%)	6,031.58 (-75%)	24,280.36 (-2%)	24,701.55	0.00	0.00
Desktop, Laptop, and Tablet Computers Available for Staff Use	55		52	52 (+4%)	50 (+22%)	41	41

Website Stats

November 2021

	BDL Monthly Total	BDL YTD	BDL Year End (Year-over-Year Change)				
			2020	2019	2018	2017	2016
Monthly Website Sessions	4,457	43,576 (+16%)	41,586 (-28%)	58,161 (+28%)	45,594 (-38%)	73,326 (-2%)	75,139 (+3%)
Monthly Website Page Views	7,918	110,459 (+32%)	92,094 (-29%)	129,778 (+9%)	118,634 (-33%)	177,799 (-2%)	182,084 (+7%)

Faxes, Prints, and Sales

November 2021

	BDL Monthly Total	BDL YTD	BDL Year End (Year-over-Year Change)				
			2020	2019	2018	2017	2016
Fax Pages Received	5	118 (-15%)	149 (-57%)	350 (-16%)	419 (+61%)	260 (+19%)	219 (+27%)
Fax Pages Sent	697	5,925 (+64%)	3,935 (-59%)	9,524 (+3%)	9,249 (+138%)	3,879 (+123%)	1,741 (-7%)
Free Prints for Job Seekers, Students, etc.	616	2,948 (+180%)	1,091 (-61%)	2,796 (-23%)	3,631 (+16%)	3,128 (+9%)	2,878 (+23%)
Black and White Patron Prints (Tracking Since 6/2016)	4,819	50,930 (+59%)	33,177 (-56%)	75,818 (-6%)	81,016 (+7%)	75,606 (+113%)	35,561
Color Patron Prints (Tracking Since 6/2016)	821	8,567 (+98%)	4,709 (-58%)	11,299 (-8%)	12,285 (+20%)	10,253 (+154%)	4,036
Flash Drives Sold (Tracking Since 6/2016)	0	14 (-22%)	18 (-51%)	37 (-10%)	41 (-27%)	56 (+4%)	54
Earbuds Sold (Tracking Since 6/2016)	3	110 (-15%)	131 (-72%)	462 (-14%)	538 (+29%)	416 (+151%)	166

Fines and Fees

Overdue Fines Dropped in 2017

November 2021

	BDL Monthly Total	BDL YTD	BDL Year End (Year-over-Year Change)				
			2020	2019	2018	2017	2016
Fines and Fees Payments Received	\$ 140.37	\$ 1,348.30 (-18%)	\$ 1,717.01 (-44%)	\$ 3,092.62 (+28%)	\$ 2,412.73 (-68%)	\$ 7,628.31 (-24%)	\$ 10,062.96 (-30%)
Outstanding Fines and Fees	\$ 7,009.36		53,362.56 (-4%)	55,588.42 (-0%)	55,850.27 (-34%)	84,232.33 (-63%)	228,102.90 (+3%)

Debt Collections

Unique Management Services, Inc.
Tracking Since 2014

November 2021

	BDL Monthly Total	BDL YTD	BDL Year End (Year-over-Year Change)				
			2020	2019	2018	2017	2016
Fine Payments as a Result of Collection Agency's Efforts	\$ 0.00	\$ 0.00	\$ 0.00	\$ 268.00 (-94%)	\$ 4,183.45 (+1,727%)	\$ 229.00 (-76%)	\$ 947.13 (+16%)
Library Materials Returned as a Result of Collection Agency's Efforts	\$ 0.00	\$ 0.00	\$ 0.00	\$ 0.00	\$ 462.00 (-48%)	\$ 888.95 (-33%)	\$ 1,317.93 (-2%)
What We Paid Collection Agency for Their Services	\$ 0.00	\$ 0.00	\$ 0.00	\$ 134.10 (-75%)	\$ 528.66 (-5%)	\$ 558.08 (-45%)	\$ 1,022.23 (-3%)

Value to Our Service Area

Visit <https://www.BranchDistrictLibrary.org/value>
to learn how we determine these numbers.

November 2021

	BDL Monthly Total	BDL YTD	BDL Year End (Year-over-Year Change)				
			2020	2019	2018	2017	2016
Value from Physical Item Checkouts	\$ 89,321.94	\$ 959,492.80 (+24%)	\$ 822,979.52 (-53%)	\$ 1,755,554.08 (-7%)	\$ 1,888,907.75 (-12%)	\$ 2,135,671.28 (+0%)	\$ 2,132,387.79 (-2%)
Value from Attending Programs (Tracking Since 1/2018)	\$ 3,075.00	\$ 72,050.00 (-41%)	\$ 126,690.00 (+7%)	\$ 118,485.00 (-6%)	\$ 125,795.00	\$ 0.00	\$ 0.00
Value from Fax Service (Tracking Since 1/2018)	\$ 702.00	\$ 5,925.00 (+60%)	\$ 4,056.00 (-60%)	\$ 10,205.00 (+6%)	\$ 9,668.00	\$ 0.00	\$ 0.00
Value from Free Prints (Tracking Since 1/2018)	\$ 92	\$ 403 (+158%)	\$ 163 (-61%)	\$ 419 (-23%)	\$ 545	\$ 0	\$ 0
Value from Notary Services (Tracking Since 1/2018)	\$ 20.00	\$ 280.00 (+24%)	\$ 225.00 (-53%)	\$ 475.00 (+44%)	\$ 330.00	\$ 0.00	\$ 0.00
Value from Digital Services (Tracking Since 1/2018)	\$ 13,720.00	\$ 134,968.00 (+4%)	\$ 138,316.00 (+2%)	\$ 135,824.00 (+7%)	\$ 127,476.00	\$ 0.00	\$ 0.00
Value from Using Library Computers (Tracking Since 1/2018)	\$ 2,151.36	\$ 17,756.97 (-2%)	\$ 18,094.74 (-75%)	\$ 72,841.08 (-2%)	\$ 74,104.66	\$ 0.00	\$ 0.00
Value from Using Library Wifi (Tracking Since 1/2018)	\$ 1,765.19	\$ 16,227.61 (-12%)	\$ 19,942.44 (-40%)	\$ 33,232.50 (+2%)	\$ 32,565.33	\$ 0.00	\$ 0.00
TOTAL Value of Free Library Services	\$ 110,847.89	\$ 1,207,102.98 (+13%)	\$ 1,130,466.45 (-47%)	\$ 2,127,036.06 (-6%)	\$ 2,259,391.39 (+6%)	\$ 2,135,671.28 (+0%)	\$ 2,132,387.79 (-2%)

Materials Expenditures

Tracking since 2018

November 2021

	BDL Monthly Total	BDL YTD	BDL Year End (Year-over-Year Change)				
			2020	2019	2018	2017	2016
Amount Spent on Books	\$ 4,416.63	\$ 97,483.44 (+24%)	\$ 85,727.68 (+12%)	\$ 76,878.30 (-18%)	\$ 93,763.50	\$ 0.00	\$ 0.00
Amount Spent on Periodicals	\$ 116.00	\$ 641.21 (-78%)	\$ 5,390.61 (-5%)	\$ 5,663.99 (-20%)	\$ 7,085.59	\$ 0.00	\$ 0.00
Amount Spent on Audiovisual Materials	\$ 1,677.74	\$ 14,557.47 (-21%)	\$ 16,992.04 (+13%)	\$ 15,009.96 (-17%)	\$ 17,998.47	\$ 0.00	\$ 0.00
Amount Spent on Digital Resources	\$ 2,012.46	\$ 28,721.79 (-3%)	\$ 31,708.66 (+12%)	\$ 28,412.62 (-35%)	\$ 43,798.90	\$ 0.00	\$ 0.00
TOTAL Spent on All Library Materials	\$ 8,222.83	\$ 141,403.91 (+9%)	\$ 139,818.99 (+11%)	\$ 125,964.87 (-23%)	\$ 162,646.46	\$ 0.00	\$ 0.00

Other Expenditures

Tracking since 2018

November 2021

	BDL Monthly Total	BDL YTD	BDL Year End (Year-over-Year Change)				
			2020	2019	2018	2017	2016
Total Materials Expenditures	\$ 8,222.83	\$ 141,403.91 (+9%)	\$ 139,818.99 (+11%)	\$ 125,964.87 (-23%)	\$ 162,646.46	\$ 0.00	\$ 0.00
Total Staff Expenditures	\$ 64,731.00	\$ 885,537.72 (+1%)	\$ 956,326.38 (-18%)	\$ 1,172,756.92 (-20%)	\$ 1,469,560.33	\$ 0.00	\$ 0.00
Expenditures in other categories	\$ 58,770.60	\$ 766,882.95 (+112%)	\$ 483,894.79 (+37%)	\$ 353,231.25 (-16%)	\$ 422,747.74	\$ 0.00	\$ 0.00
TOTAL Expenditures in all Categories	\$ 123,501.60	\$ 1,693,107.47 (+5%)	\$ 1,819,492.24 (+1%)	\$ 1,797,240.67 (-13%)	\$ 2,054,954.53	\$ 0.00	\$ 0.00

Staffing

November 2021

	BDL Monthly Total	BDL YTD	BDL Year End (Year-over-Year Change)				
			2020	2019	2018	2017	2016
Total BDL Staff	34	35 (avg) (-3%)	36 (avg) (-3%)	37 (avg) (-8%)	40 (avg) (+5%)	37 (avg) (+9%)	34 (avg) (+17%)
BDL Staff with MLS Degree	5	5 (avg)	5 (avg) (+25%)	5 (avg) (-33%)	6 (avg) (+20%)	5 (avg) (+150%)	3 (avg)
Worked Full-Time Equivalents	18.03	22.04 (avg) (-8%)	24.53 (avg) (-4%)	25.78 (avg) (-4%)	26.92 (avg) (+8%)	24.91 (avg) (+41%)	17.90 (avg) (+13%)
Hours of Specialized Training for Staff (Tracking Since 1/2019)	70	734 (-35%)	1,170 (+119%)	534	0	0	0
Hours Volunteers Worked at the Library (Tracking Since 1/2019)	0	68 (+74%)	39 (-96%)	1,065	0	0	0

Outreach Services

Began 2018

November 2021

	BDL Monthly Total	BDL YTD	BDL Year End (Year-over-Year Change)				
			2020	2019	2018	2017	2016
Number of Patrons Served by Outreach Services	3	110 (+255%)	42 (-40%)	70 (-8%)	76 (+2,433%)	3	0
Number of Items Delivered to Outreach Patrons	15	512 (+274%)	242 (+10%)	220 (-64%)	606 (+2,231%)	26	0

Coldwater Branch Heritage Room

Stats part of Coldwater Branch totals above; shown here for convenience.

November 2021

	Heritage Room	BDL YTD	BDL Year End (Year-over-Year Change)				
			2020	2019	2018	2017	2016
Heritage Room Attendance	19	191 (+82%)	105 (-78%)	484 (-34%)	736 (+12%)	658 (-7%)	705 (+51%)
In-Person Reference Questions	14	56 (-30%)	80 (-81%)	412 (-42%)	708 (+29%)	550 (+664%)	72 (+140%)
Reference Telephone Calls	6	107 (+78%)	60 (-74%)	232 (-16%)	277 (-36%)	433 (+15%)	376 (+83%)
Online Reference Questions	4	41 (+21%)	34 (-48%)	65 (+8%)	60 (-5%)	63 (-24%)	83 (+8%)

Coldwater Branch Kids' Place

Stats part of Coldwater Branch totals above; shown here for convenience.
Tracking separately since April 2019.

November 2021

	Kids' Place	BDL YTD	BDL Year End (Year-over-Year Change)				
			2020	2019	2018	2017	2016
Kids' Place Attendance	447	3,856 (+62%)	2,385 (-75%)	9,710	0	0	0
In-Person Reference Questions	53	670 (+196%)	226 (-61%)	575	0	0	0
Reference Telephone Calls	13	196 (+68%)	156 (-30%)	224	0	0	0
Online Reference Questions	1	2	0	0	0	0	0

Coldwater Branch Teen Space

Stats part of Coldwater Branch totals above; shown here for convenience.
Tracking separately since April 2019.

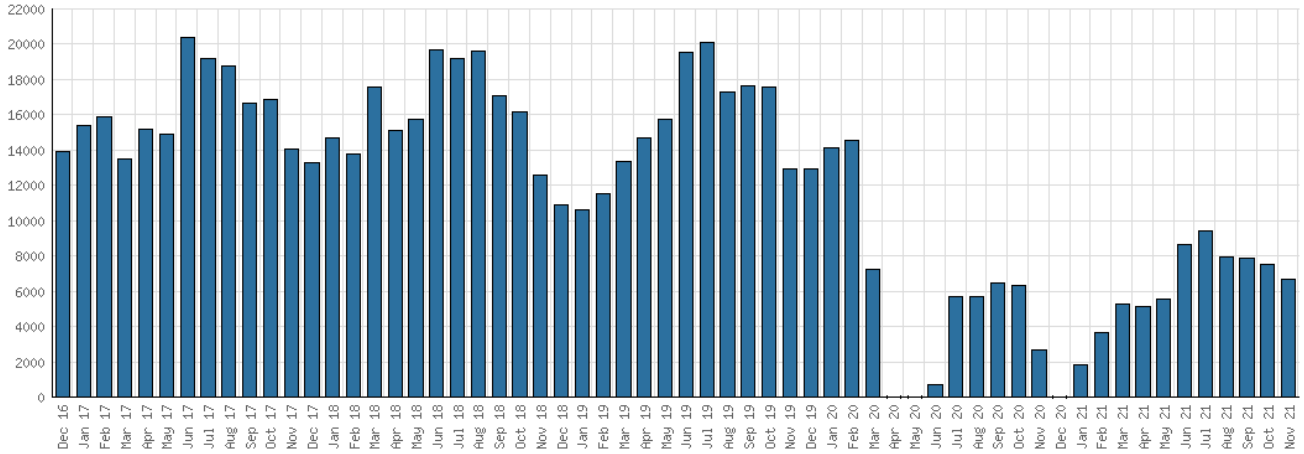
November 2021

	Teen Space	BDL YTD	BDL Year End (Year-over-Year Change)				
			2020	2019	2018	2017	2016
Teen Space Attendance	0	681 (-19%)	845 (-80%)	4,172	0	0	0
In-Person Reference Questions	0	11 (+175%)	4 (-96%)	93	0	0	0
Reference Telephone Calls	0	0	0	0	0	0	0
Online Reference Questions	0	0	0	0	0	0	0

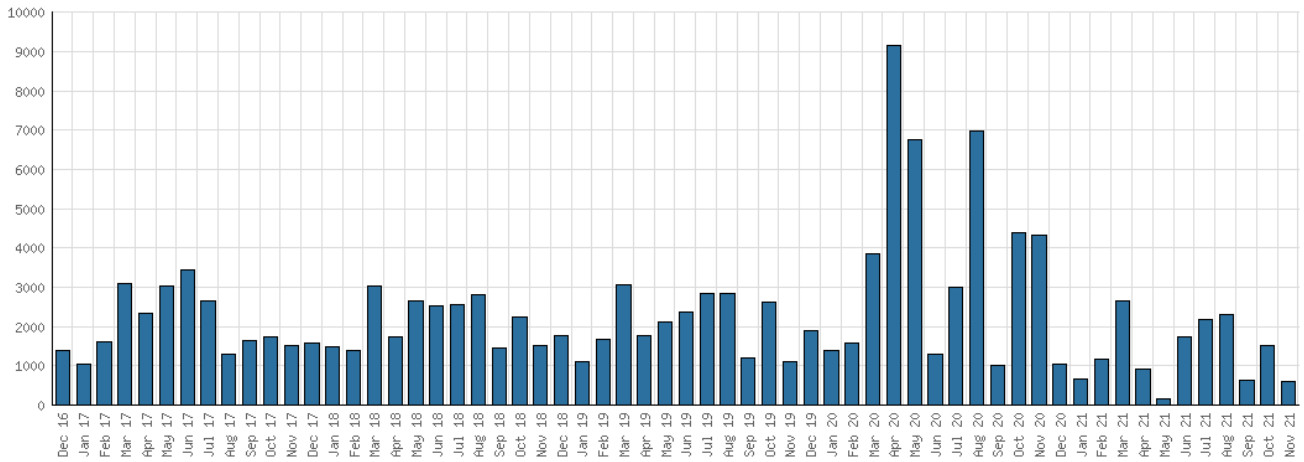
Selected Graphs

5-year Monthly Trends

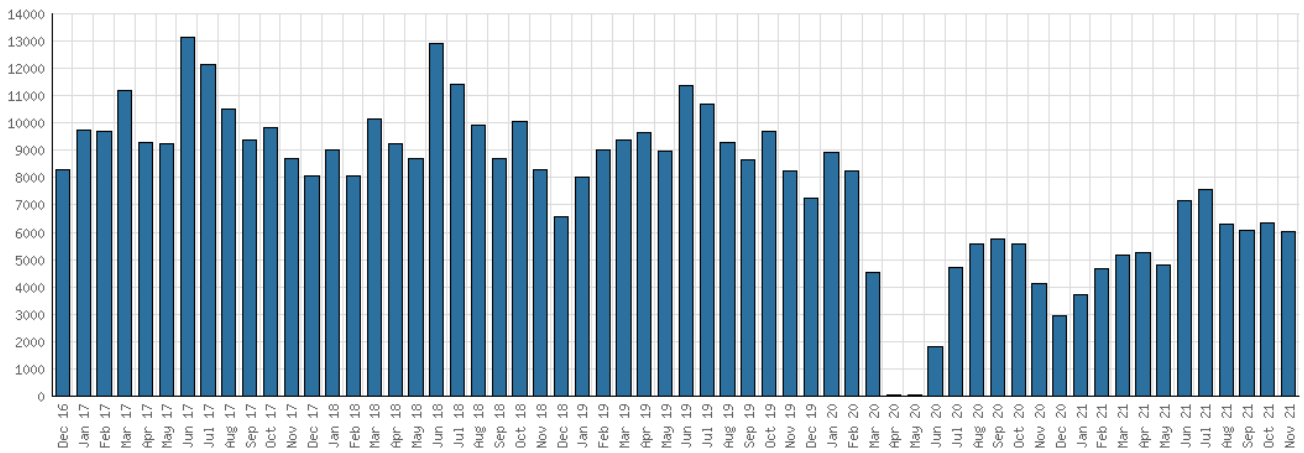
District Attendance



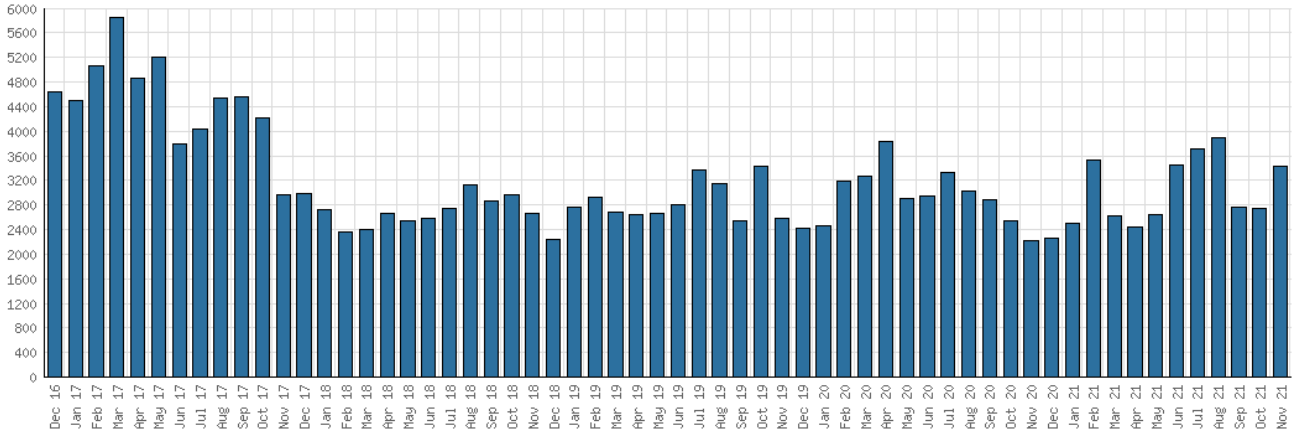
District Program Attendance



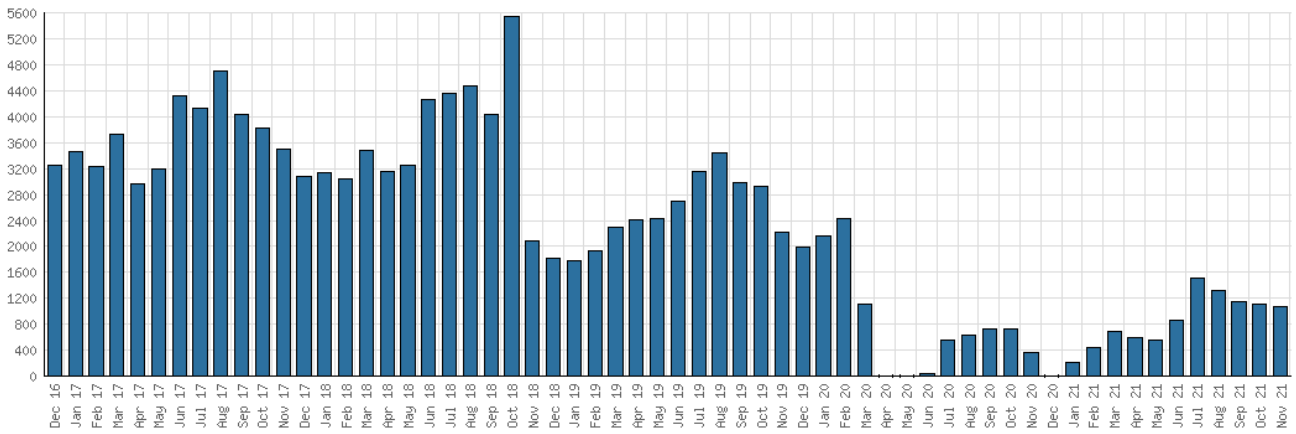
District Physical Checkouts



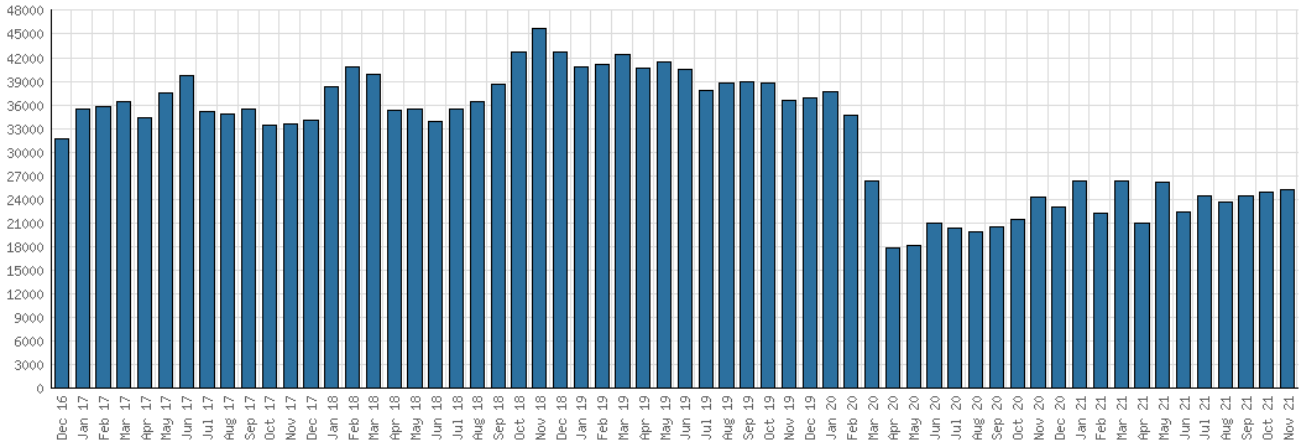
District Digital Usage



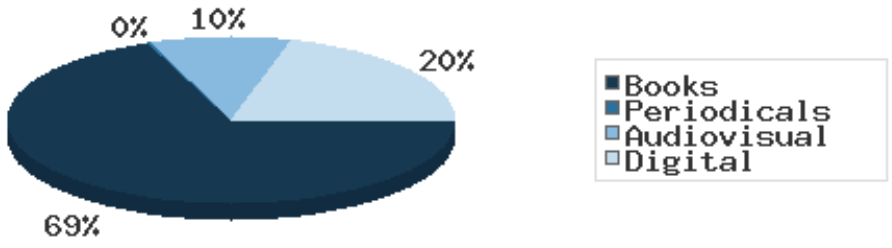
District Use of Library-Provided Computers



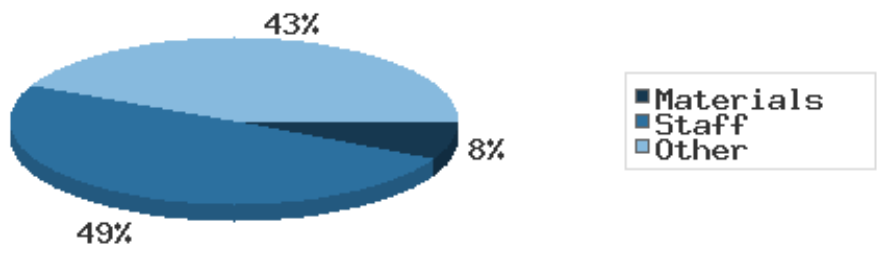
District One-Hour Sessions on Library Wifi



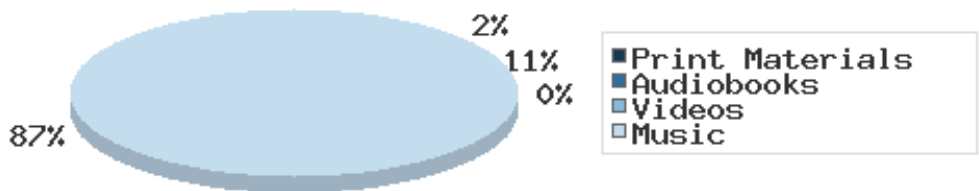
Year-to-Date Materials Expenditures



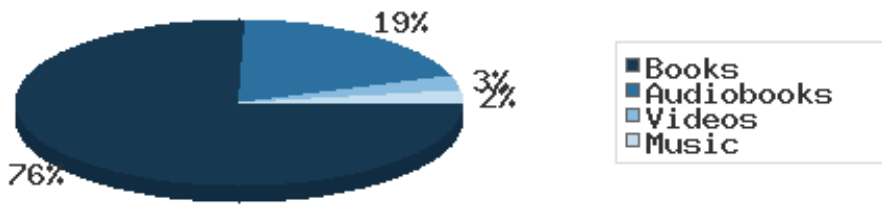
YTD Expenditures in all Categories



Physical Collection



Digital Collection



YTD Usage Breakdown of Digital Services

